

Specification sheet LX 863

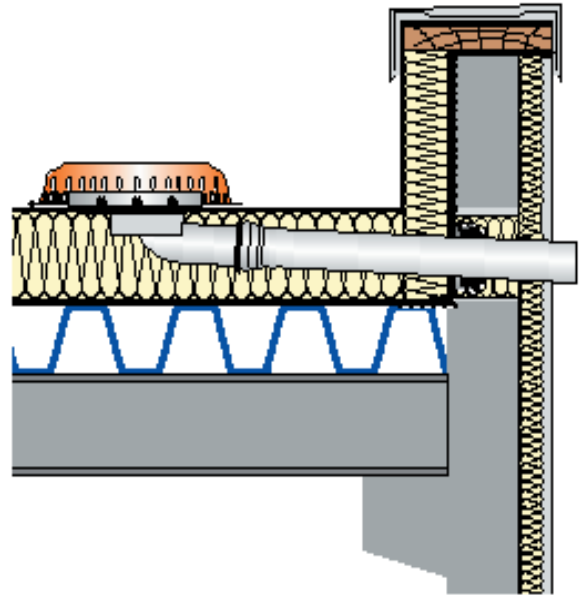
Serie 93 ATTIKASTAR® as spout

Emergency drainage

Gravity flow

Silent

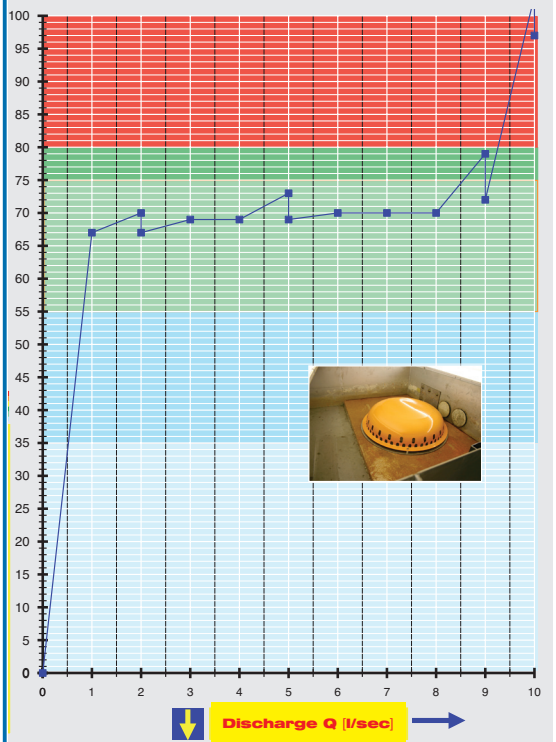
Discharge rate:	8,5 l/sec
Water height:	75 mm
Roof penetration:	106 mm
Diameter:	DN 100
LX-Number:	LX 863
Weir height:	60 mm
Drain:	ventilated
Downpipe:	-
Downpipe height:	0 m
Drainage:	on floor



LX 863 Piece list

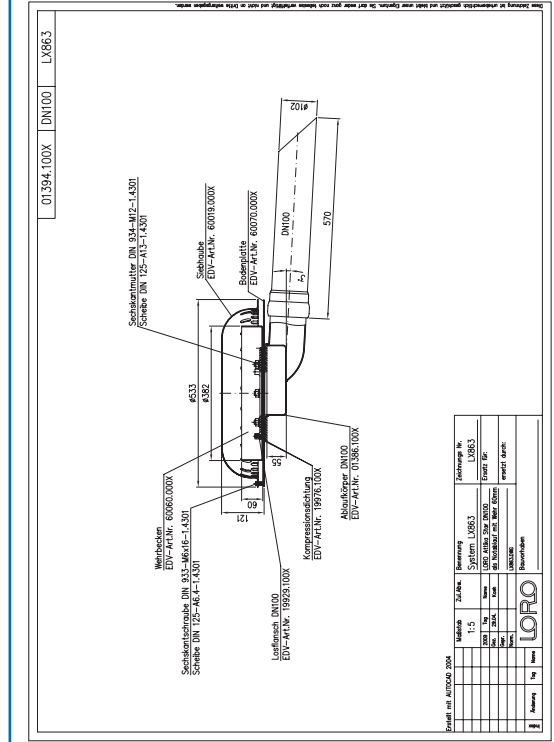
- 1 x Art.-No. 01394.100X, ATTIKASTAR® Emergency drain
- 1 x Art.-No. 01201.100X, LORO-X pipe with one socket
- 1 x Art.-Nr. 13235.100X, LORO-sliding flange
- 1 x Art.-Nr. 00911.100X, LORO-X sealing element
- 1 x Art.-Nr. 00986.000X, LORO-X lubricant

hQ - Head-Discharge curve



Systempower

CAD



Systemshape

Water height	mm	5	10	15	20	25	30	35	40	45	50	55	60	65	70	75
Discharge	l/sec													1,9	2,0	8,5
														Silent		

System-Variant for LORO-X ATTIKASTAR® Scupper drainage system

System component LORO-ATTIKASTAR® scupper emergency drain, DN 100

mit **clamping flange for
bituminous and plastic
roofing sheets**

drain Art.-No. 01394.100X

Weight: 13,0 kg



LX863-4X

